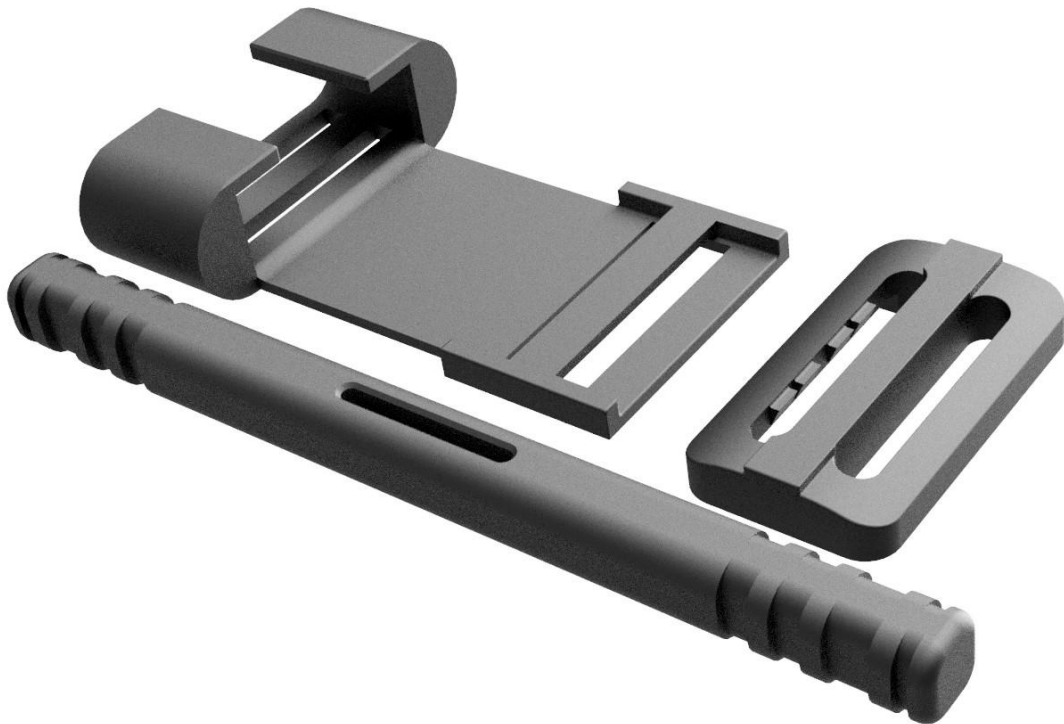


## 3D makers together for Ukraine



### Thanks for helping out!

This is a private person initiative to support Ukraine. No corporations or associated companies are involved.

We will only print the parts

New update directives from [Makershelp.org](https://Makershelp.org)

Print as the direction shown on the images that follow.

UPDATE! At this time only Markforged ONYX and Addnite P15R are approved for the clip as it needs to be bendable and flexible.

We are trying to source and get donations for Addnite P15R so Makers can print on regular FDM 3D printers.

Follow the instructions or updates on the [Makershelp.org](https://Makershelp.org) web site as things do change.

Any other material has to be sent to Makershelp.org in Denmark for a strength test before larger production.

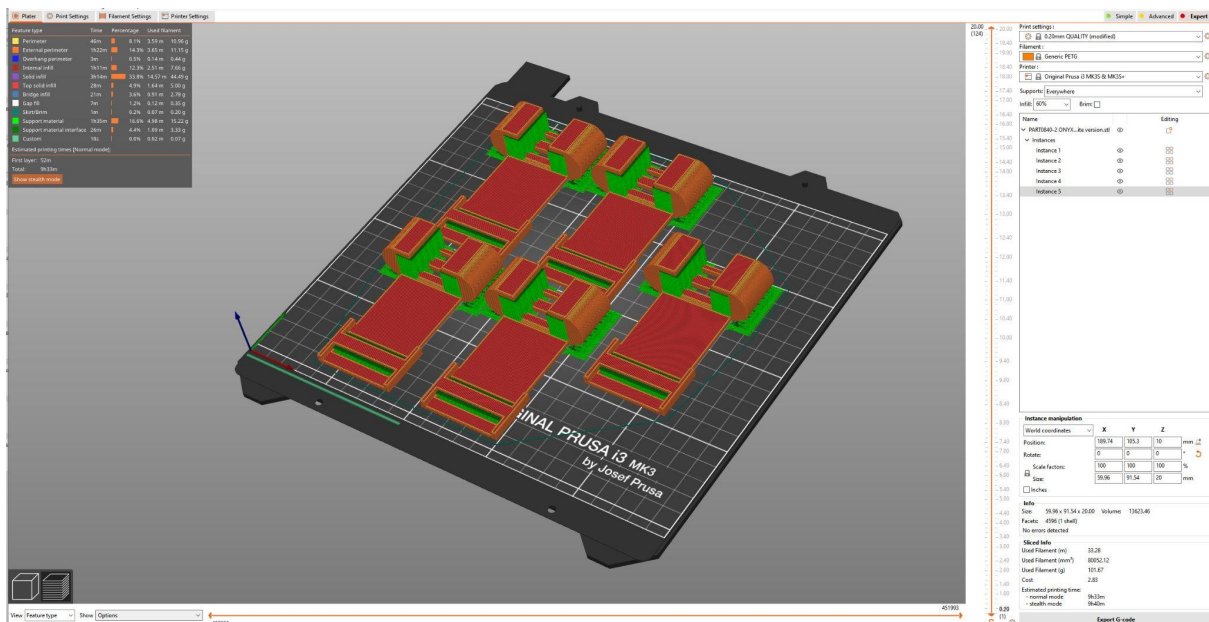
Print with 0.4 or 0.6 mm Nozzle only. All parts must be printed in 100% infill and 0.2 mm layer height. Use support . Please use PETG Onyx or Addnite. All prints are quality controlled by charity organization in Denmark Makershelp.org

Ship direct to:  
3DVerkstan Danmark  
Lillelundvej 3, Gate 8  
7400 Herning  
Denmark

Hope this is it. Glory to Ukraine

<https://makershelp.com/>

Below you find the printing placement on a Prusa that will then run for approx 9 hours for each print with Addnite P15R.



3x project PART003 handle Tourquet v7 - Fusion360:CAD based on Sketch

Print Settings: Simple | Advanced | Expert

Print settings: 0.25mm SPEED (modified)

Material: Generic PLA

Printer: Original Prusa i3 MK3S & MK3S+

Support: None

MM: 100%

Name	Editing
Part003 handle v7	
Instance 1	
Instance 2	
Instance 3	
Instance 4	
Instance 5	

Skewed Info

- Used Filament (m): 37.83
- Used Filament (m<sup>3</sup>): 0.095481
- Used Filament (g): 112.83
- Cost: 2.87
- Estimated printing time: 8h24m
- normal mode
- smooth mode

Export G-code

3x project PART003 handle Tourquet v7 - Fusion360:CAD based on Sketch

Print Settings: Simple | Advanced | Expert

Print settings: 0.25mm SPEED (modified)

Material: Generic PLA

Printer: Original Prusa i3 MK3S & MK3S+

Support: Topostructure

MM: 100%

Name	Editing
Part003 handle v7	
Instance 1	
Instance 2	
Instance 3	
Instance 4	
Instance 5	
Instance 6	
Instance 7	
Instance 8	
Instance 9	
Instance 10	
Instance 11	
Instance 12	

Instance manipulation

Input coordinates	X	Y	Z
Position:	70.3	50.69	0
Rotation:	0	0	0
Scale factors:	100	100	100
Size:	30.48	51.84	0.51

Info

- Time: 35.46 h 55.54 s 0.01
- Volume: 7755.75
- Facets: 5542 (1 sh=0)
- No errors detected

Skewed Info

- Used Filament (m): 61.26
- Used Filament (m<sup>3</sup>): 0.048870
- Used Filament (g): 121.07
- Cost: 3.19
- Estimated printing time: 9h25m
- normal mode
- smooth mode

Export G-code